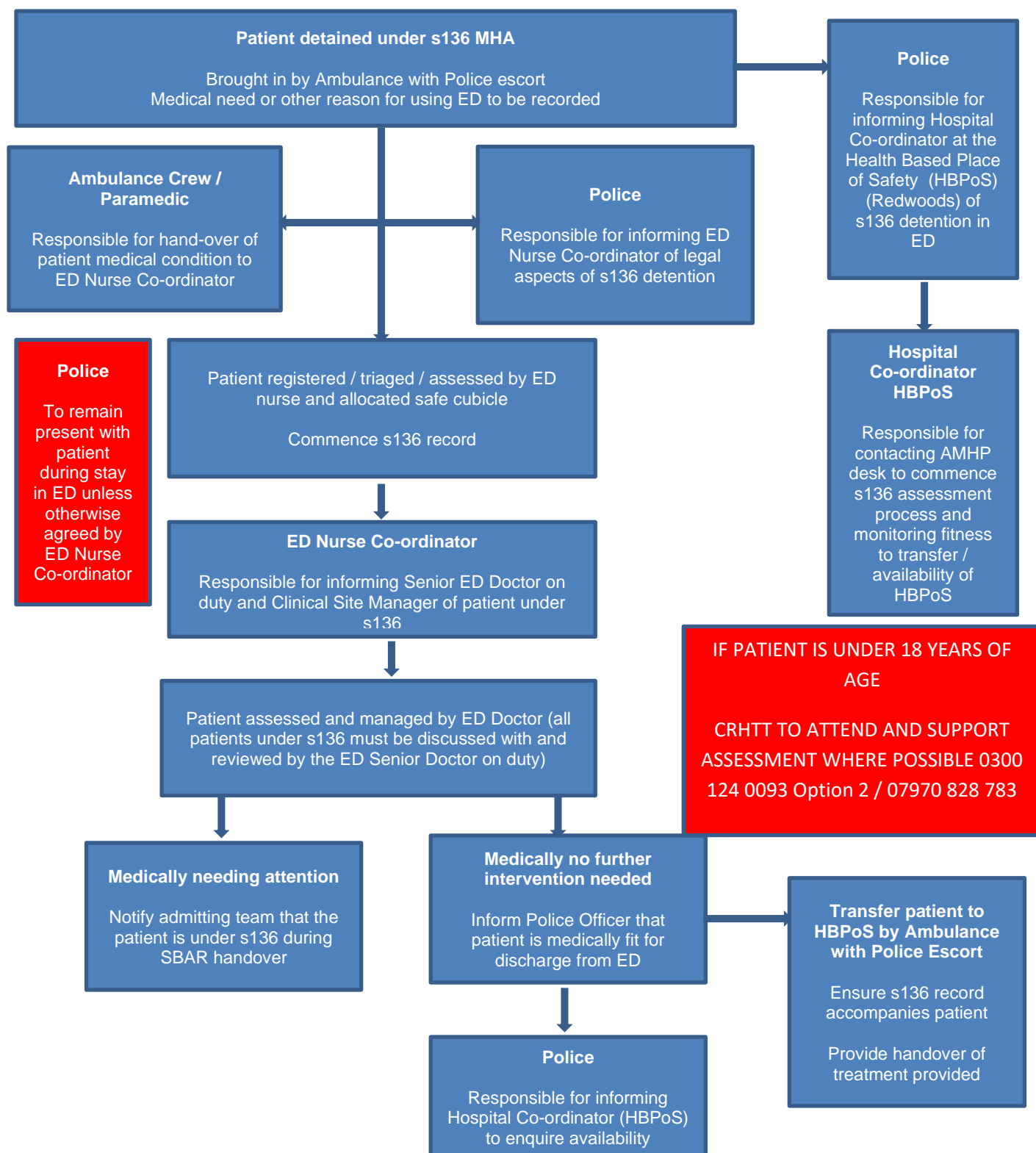


Section 136 Pathway in the Emergency Departments (ED)



ED Nurse Co-ordinator shall ensure that the s136 record is forwarded to the MPFT MHA Administrator to enable a full record of detentions to be maintained. For Patients transferred to the Redwoods Place of Safety on the section 136 following treatment, the record must accompany the Patient. For those where the assessment takes place in the Emergency Department only the s136 record must be sent to the MPFT MHA Administrator via post to MHL, The Redwoods Centre, Somerby Drive, Bicton Heath Shrewsbury SY3 8DS within 1 day of the detention.

Section 136 Pathway in the Emergency Departments (ED)

A patient detained under section 136 of the Mental Health Act 1983 (s136) (MHA), can be conveyed to the nearest Emergency Department within Shrewsbury and Telford Hospital NHA Trust in an emergency if there is concern about their physical medical state. The ED would then become an alternative Place of Safety (PoS). Police Officers are required to remain in the ED pending transfer to the Health Based Place of Safety (HBPoS) at the Redwoods Centre, or until otherwise agreed by the ED Nurse Co-ordinator.

Emergency cases include:

- serious physical injury requiring urgent treatment
- head injury / suspected head injury
- suspected overdose
- excited delirium
- extreme intoxication

Patients detained under s136 in the ED need to be medically assessed and managed, and admitted or medically discharged back to the care of the Police within 4 hours (including transfer to the HBPoS at the Redwoods, or in **exceptional** circumstances, to Police Custody).

Exceptional use of Police Custody:

- Medically discharged from ED and fit for detention in custody
- Unmanageable risk of violence

Patients detained under s136 who are medically discharged from the ED need to be transferred to the HBPoS by West Midlands Ambulance Service with police escort.

It is the responsibility of the Police to liaise with the Hospital Co-ordinator at the HBPoS to accept transfer.

It is the responsibility of the ED Nurse Co-ordinator to contact West Midlands Ambulance Service to arrange transport to the HBPoS using 999.

This is to ensure that patients can be seen, assessed and managed as soon as possible where the assessments need to be completed by an Approved Mental Health professional (AMHP) and section 12 Doctor.

A patient detained under s136 should not stay longer than 4 hours in the ED.

If a patient detained under s136 has been medically discharged from the ED and cannot be transferred to the HBPoS at the Redwoods Centre due to it being fully occupied or due to change of use, the ED Nurse Co-ordinator should liaise with the Hospital Co-ordinator at the HBPoS to agree an alternative. This will require escalation to Senior Management in some cases.